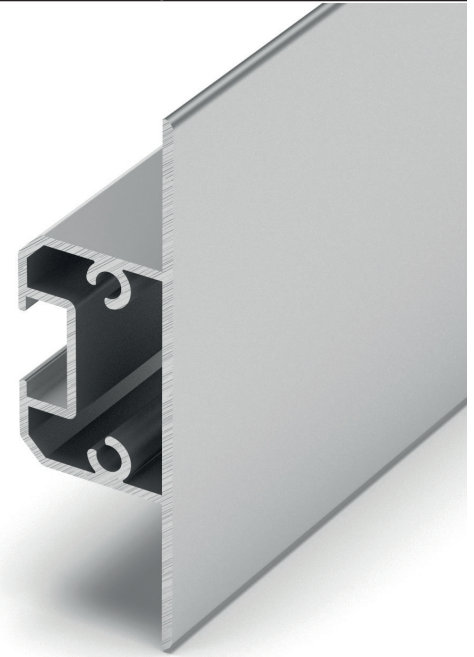


----- finitura/finish



Gola doppia piatta per fianchi da 19 mm abbinabile con la gola singola TS.6427.

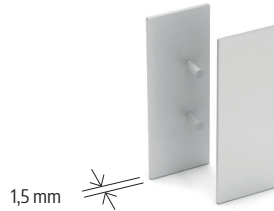
Double flat gola for 19 mm sides combinable with single gola TS.6428.

FINITURE DISPONIBILI - AVAILABLE FINISHES

| | |
|-----|-----|
| ARP | ASN |
| ARC | AVB |
| ARS | AVN |
| APS | V |

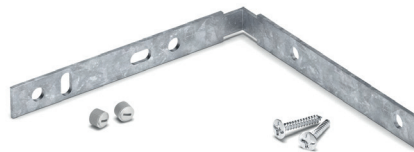
TAPPI IN PVC - PVC END CAPS

TAPPI TS.6428



SQUADRETTA IN ACCIAIO - STEEL BRACKET

SF95x95x1.5 / SQUADRETTA 90°



SISTEMI DI FISSAGGIO - FIXING SYSTEM

9721/54N

