

□ - 0.5 mm, ○ + 0.5 mm
 ---- finitura/finish

Gola singola in altezza 33 mm e abbinabile con la gola doppia D.1491.

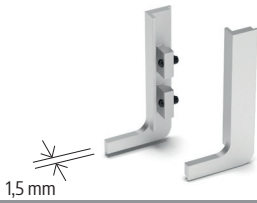
Single gola w/height of 33 mm combinable with double gola D.1491.

FINITURE DISPONIBILI - AVAILABLE FINISHES

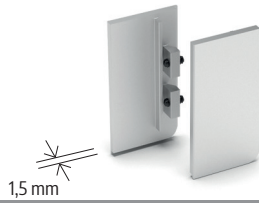
ARP	ASN
ARC	AVB
ARS	AVN
APS	V

TAPPI IN ALLUMINIO CON COPERTURA - ALUMINIUM END CAPS WITH COVERAGE

TVXGL33DX - TVXGL33SX

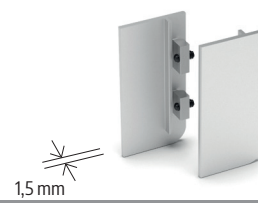


TPXGL33DX - TPXGL33SX



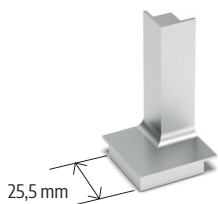
TAPPI IN ALLUMINIO - ALUMINIUM END CAPS

TECOXGL33DX - TECOXGL33SX

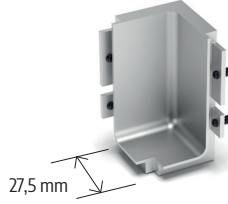


ANGOLARI IN ALLUMINIO - ALUMINIUM CORNERS

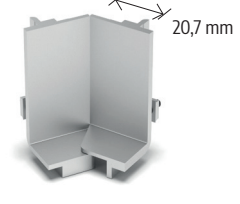
AXGL33E



AXGL33I



MAXGL33



SISTEMI DI FISSAGGIO - FIXING SYSTEM

CZXGLS

